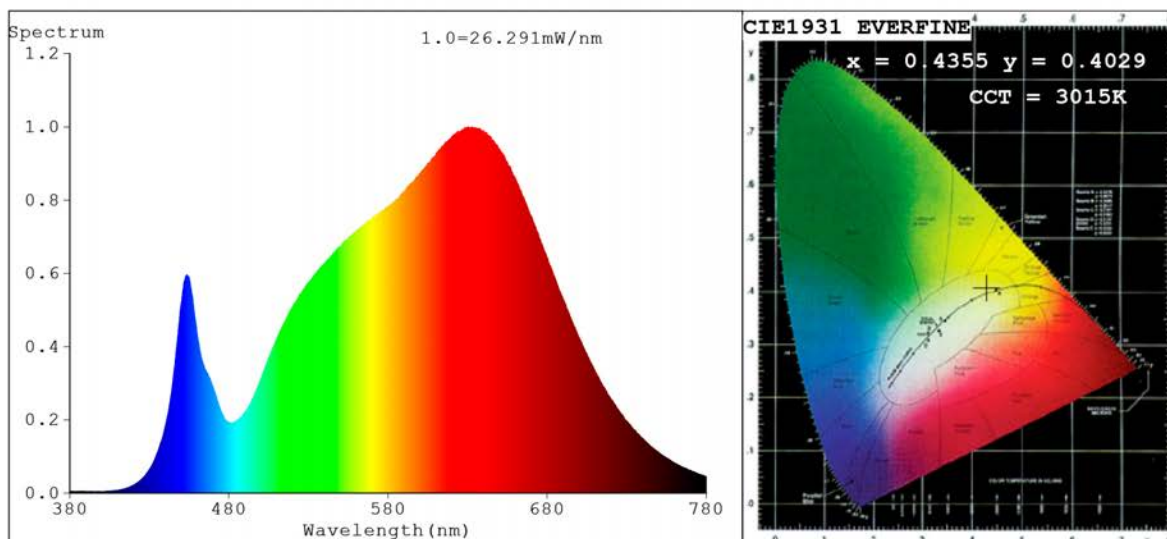


## Spectrum Test Report



### Color Parameters:

Chromaticity Coordinate:  $x=0.4355$   $y=0.4029$   $u'=0.2501$   $v'=0.5207$   
 CCT=3015K (Duv=-0.0003) Dominant WL:  $\lambda_d = 582.8\text{nm}$  Purity=51.7%  
 Ratio: R=24.1% G=73.4% B=2.6%; Peak WL:  $\lambda_p = 630.3\text{nm}$  FWHM=174.1nm  
 Render Index: Ra=92.8 CRI=89.7 TM30: Rf=91 Rg=101 Lav=606.4nm  
 R1 =94 R2 =95 R3 =93 R4 =93 R5 =92 R6 =91 R7 =96  
 R8 =89 R9 =74 R10=85 R11=92 R12=73 R13=94 R14=95 R15=92

### Photo Parameters:

Flux = 1315 lm Eff. : 108.54 lm/W Fe = 4.790 W Scotopic:1828 S/P:1.3903

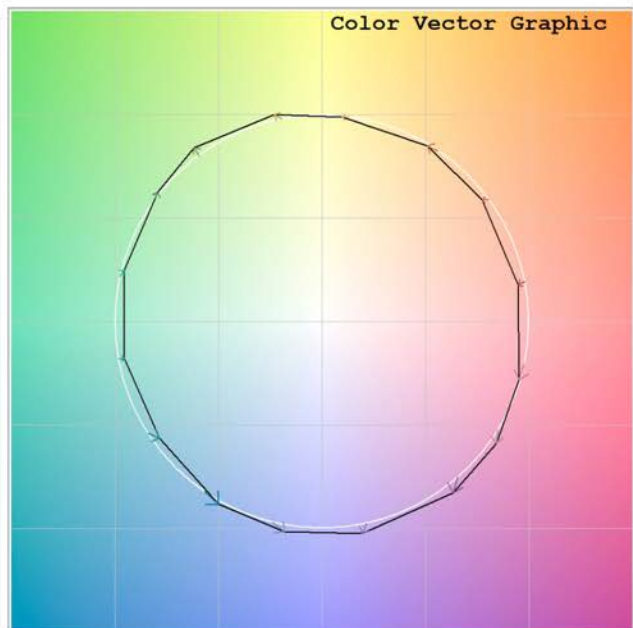
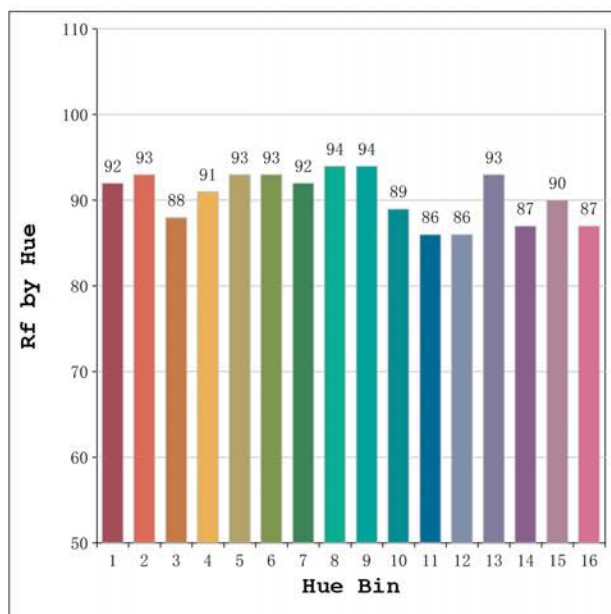
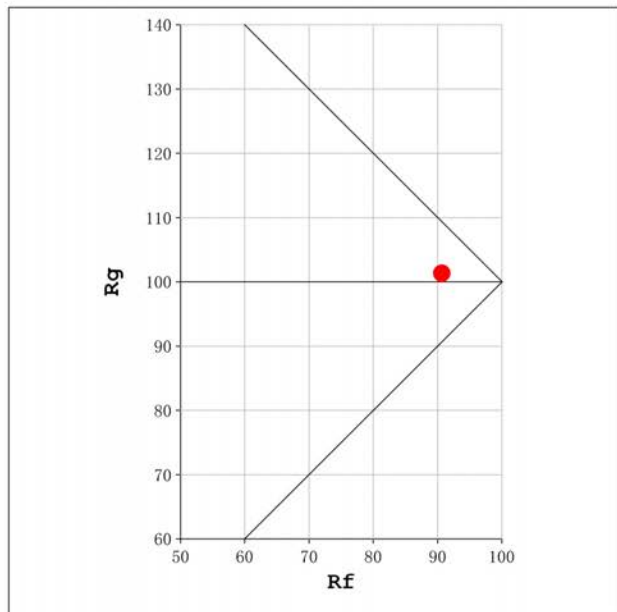
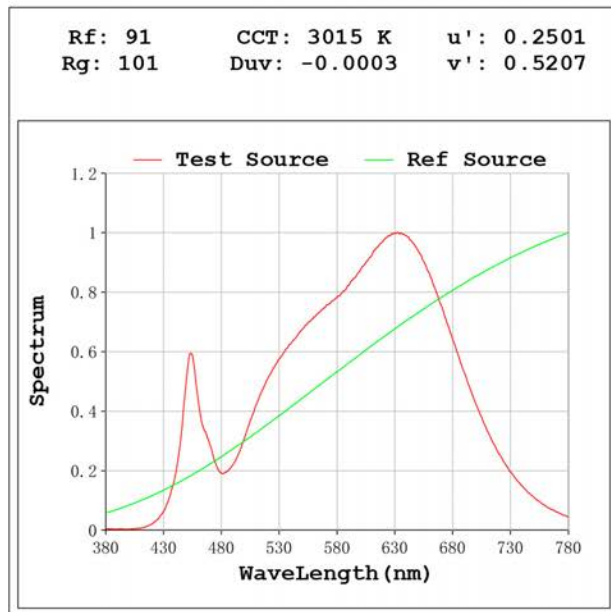
### Electrical parameters:

V = 23.998 V I = 0.5048 A P = 12.11 W PF = 1.000

Status: Integral T = 1205 ms Ip = 52848 (81%)

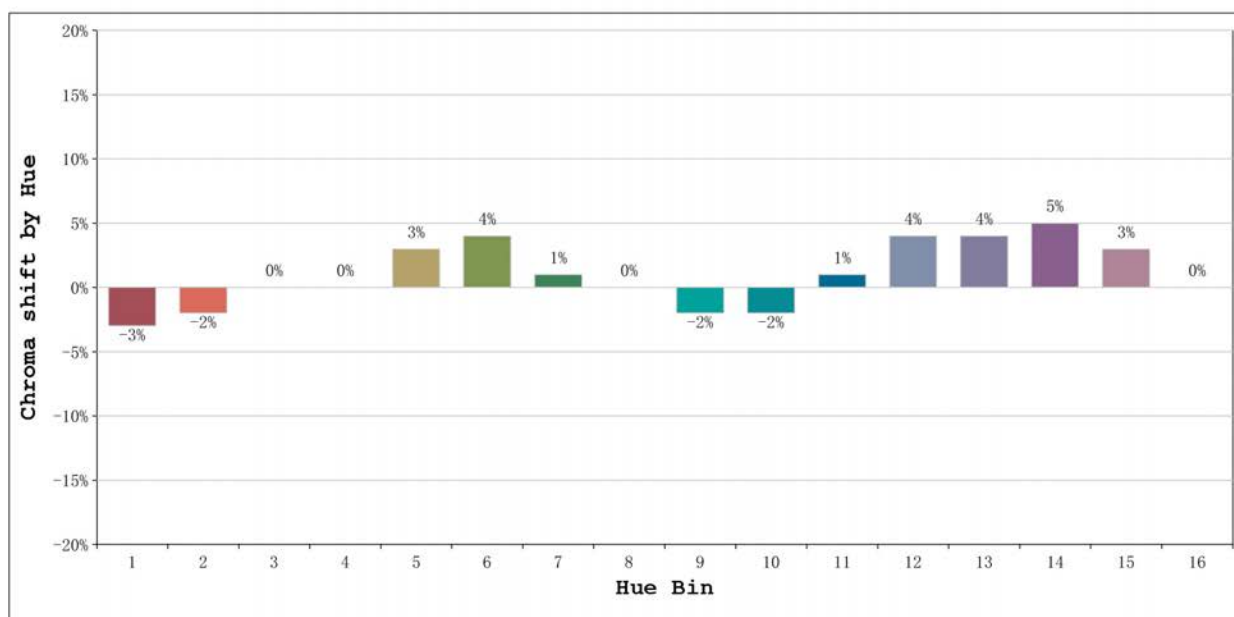
Model:Ecoled Cies pro 3000K  
 Tester:Sergio Carneros  
 Temperature:25Deg  
 Manufacturer:Luz Negra S.L.

Number: 32.088  
 Date:26-5-2021  
 Humidity:57%  
 Remarks:100cm Tira flexible



Model:Ecoled Cies pro 3000K  
 Tester:Sergio Carneros  
 Temperature:25Deg  
 Manufacturer:Luz Negra S.L.

Number: 32.088  
 Date:26-5-2021  
 Humidity:57%  
 Remarks:100cm Tira flexible



			Graphic shift(%)	
Hue Bin	Hue Angle	Rf	Chroma	Hue
1	0.0° - 22.5°	92	-3	0
2	22.5° - 45.0°	93	-2	2
3	45.0° - 67.5°	88	0	6
4	67.5° - 90.0°	91	0	3
5	90.0° - 112.5°	93	3	3
6	112.5° - 135.0°	93	4	0
7	135.0° - 157.5°	92	1	-3
8	157.5° - 180.0°	94	0	-2
9	180.0° - 202.5°	94	-2	0
10	202.5° - 225.0°	89	-2	5
11	225.0° - 247.5°	86	1	9
12	247.5° - 270.0°	86	4	7
13	270.0° - 292.5°	93	4	-2
14	292.5° - 315.0°	87	5	-5
15	315.0° - 337.5°	90	3	-5
16	337.5° - 360.0°	87	0	-7

Model:Ecoled Cies pro 3000K  
Tester:Sergio Carneros  
Temperature:25Deg  
Manufacturer:Luz Negra S.L.

Number: 32.088  
Date:26-5-2021  
Humidity:57%  
Remarks:100cm Tira flexible